

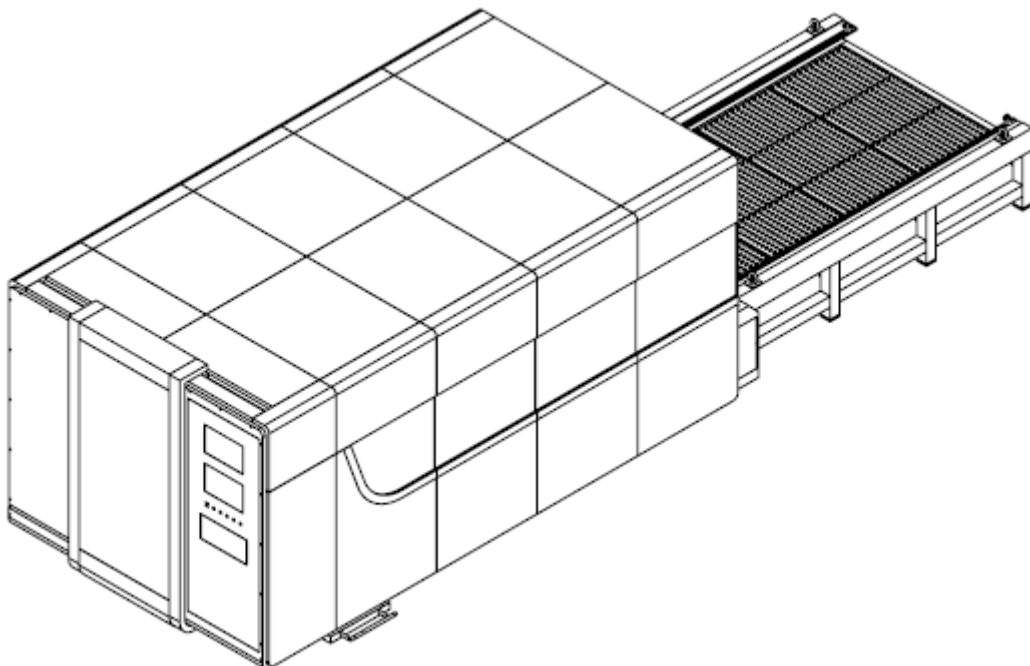
Caxtool Kft.
6791 Szeged, Dorozsmai út 157. EU
+36 62 254 826
+36 30 565 1812
d.zanocz@caxtool.hu
info@caxtool.hu

Adószám: 12871856-2-06
Adószám: HU 12871856
Bankszámla száma: 57600101-11102986
SWIFT (BIC): TAKBHUHB
IBAN: HU65 57600101 11102986 00000000
cégjegyzékszám: 06-09-014002
info:

Képgyűjtemény

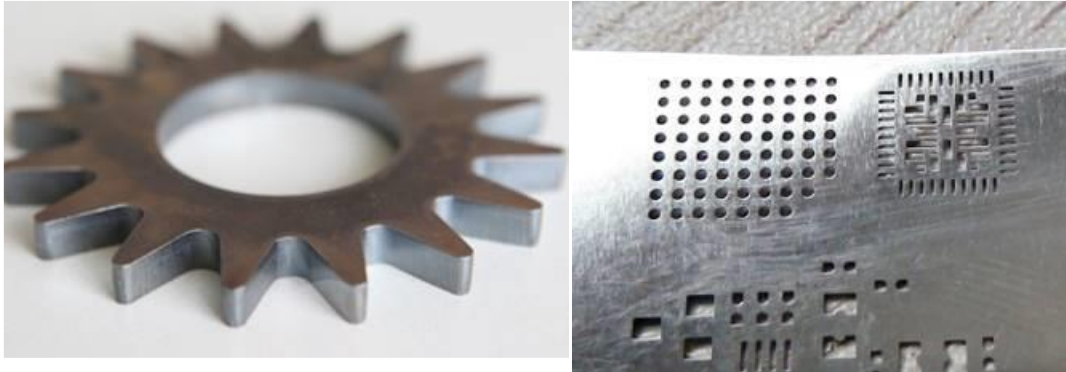
Fiber lézervágó berendezés

CAXTC_LM_3015E_3kW_J_1.0 fiber lézervágó berendezés / Fiber cutting machine



- **Alkalmazási területek / Machine Application**

Widely used in sheetmetal processing, aviation, aerospace, electronics, electrical appliances, automobile, food machinery, textile machinery, engineering machinery, precision parts, ships, metallurgy equipment, elevators, household appliances, craft gifts, tool processing, decoration, advertising, and other fields. Professional used to cut sheet metal like carbon/mildsteel, stainless steel, aluminum alloy, galvanized sheet, electrolytic plate, titanium alloy, aluminum zinc plate, etc.



- **Lézer rezonátor / JPT 3000 Fiber Laser (3000W)**



Excellent quality of laser beam, constant BP within all the ranges of laser powers, getting very small size laser spot even with longfocus.

- Special wavelength (1080nm), unique ability to cut high-reflective materials, such as aluminum, copper and brass, etc.
- Electro-optical conversion rate of the laser >25%, much more efficient than that of CO2 laser (<10%), greatly reducing power consumption.
- Laser transmission through fiber, no transmission loss.

- Modular design, "plug and play", mini size, easy installation, no maintenance of laser and beamtransmission system.
- Pumping source service life > 100,000
- Precise quality of laser beam with pretty small divergence angle.

Parameter	Unit	Specification		
Product Model		JPTCW-3000-MM-K	JPTCW-4000-MM-K	JPTCW-6000-MM-K
Nominal Average Output Power	W	3000	4000	6000
Beam Parameter Product	mm*mrad	≤4.5		
Central Emission Wavelength	nm	1080		
Spectral Width@3db	nm	<6		
Delivery Cable Length	m	15		
Cooling Method		Water Cooling (Purified Water)		
Operating Voltage, Single-phase	V	380(AC)		
Maximum Power Consumption	W	12000	16000	24000
Operation Temperature	°C	10~40		
Storage Temperature	°C	-20~50		
Weight	KG	600		
Size	mm	930*1000*1300		

- **Lézerfej / Laser Cutting Head RayTools BM110 autofókusz**

Power Rating----≤3KW
Clear Aperture----28mm
Cover Glass----φ27.9mm*4.1mm
Auto focus range----+9~-14mm
Assist gas Pressure----≤25bar Weight----~4.0kg



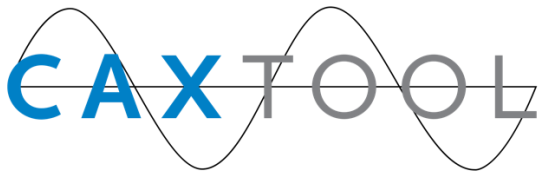
- **Vízűtő / Cooling System S&A CWFL-3000**

S&A brand CWFL-3000 water chiller is specially applied to cool the fiber laser and optic lenses at the same time, multiple use for saving cost, space and manual move, quite convenient for the user. S&A industrial water chiller has 2 temperature control modes as constant temperature and intelligent temperature control. Under intelligent mode, the water temperature is adjusted according to ambient temperature. You do not need to worry about the water temperature adjustment of seasonal changes.



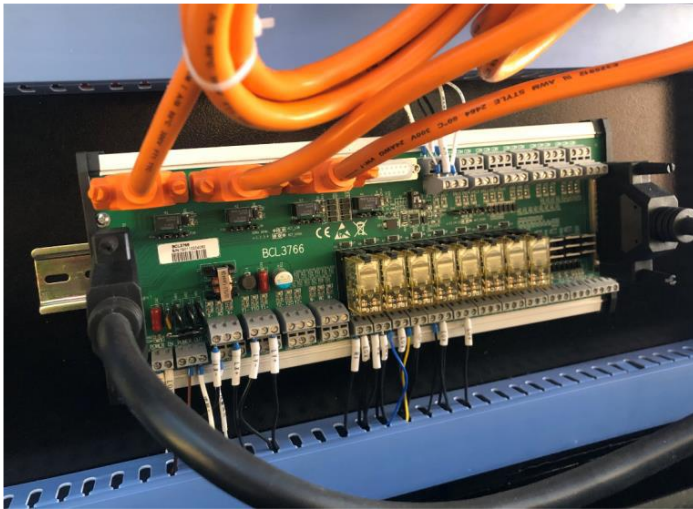
- **CNC Control System FSCUT2000C and Software CypCut**





Caxtool Kft.
6791 Szeged, Dorozsmai út 157. EU
+36 62 254 826
+36 30 565 1812
d.zanocz@caxtool.hu
info@caxtool.hu

Adószám: 12871856-2-06
Adószám: HU 12871856
Bankszámla száma: 57600101-11102986
SWIFT (BIC): TAKBHUHB
IBAN: HU65 57600101 11102986 00000000
cégjegyzékszám: 06-09-014002
info:



FSCUT2000C laser cutting control system and its **CypCut** software integrates file reading, design, output, and processing control. It's able to complete the entire process from design to processing. The software, installed in an industrial computer, provides a wealth of laser cutting processing parameters, flexible layout and cutting path editing capabilities. CypCut Control system and software in English language, supporting files: DXF, PLT, AI, LXD, etc. Drawing in the software is possible. Software is with fly cutting mode for cutting same products to save time. The nesting function automatically arranges graphs to leave minimum spaces and save materials.

- **Lineáris rendszer elemei / Transmission System**



Machine is with Taiwan YYC gear rack and PMI linear rail transmission, which ensures machine high speed movement, precision and stability as well.

- **Lineáris rendszer meghajtása / Driving system**
- **YASKAWA brand servo motors and drivers.** Machine X is driven by a 1300W motor, Y is driven by two 1300W motors, and Z (laser head auto focusing) is driven by a 400W motor.



- **Vezetékrendszer kenése / Auto Lubrication**



It automatically lubricates guide rails, which ensures the machine keep moving smoothly and with good precision.

- **Füst elszívó ventilátor / Exhaust System**



A 2.2Kw centrifugal exhaust fan strongly removes the fumes and dusts caused during cutting.

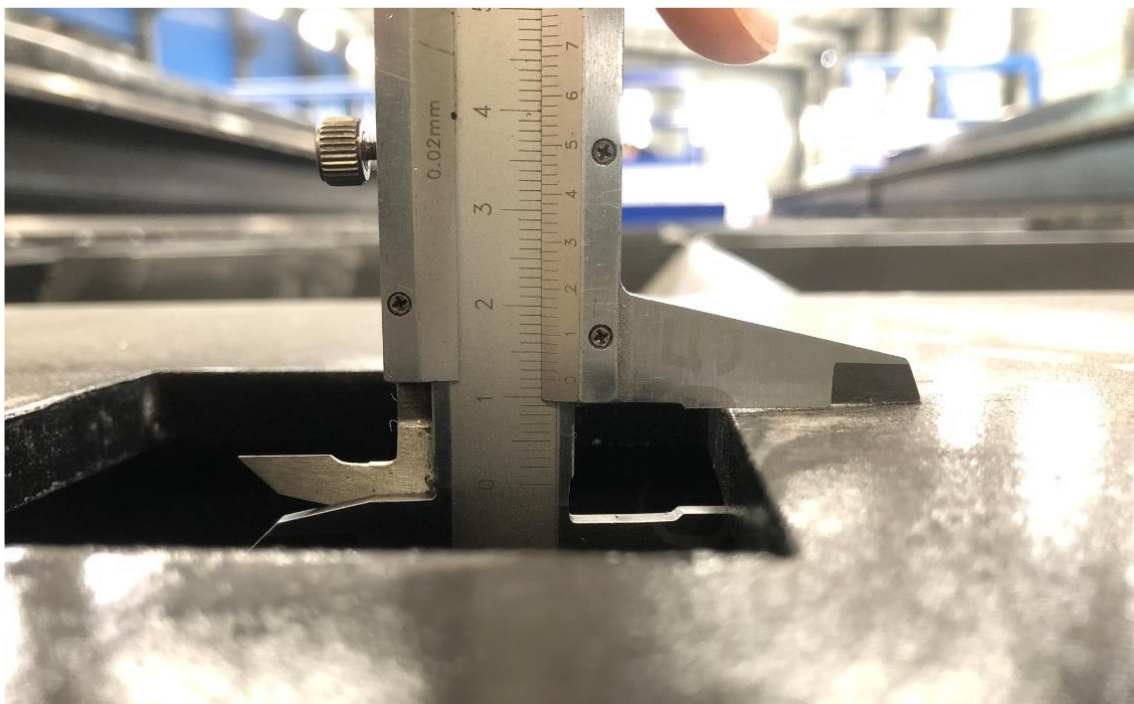
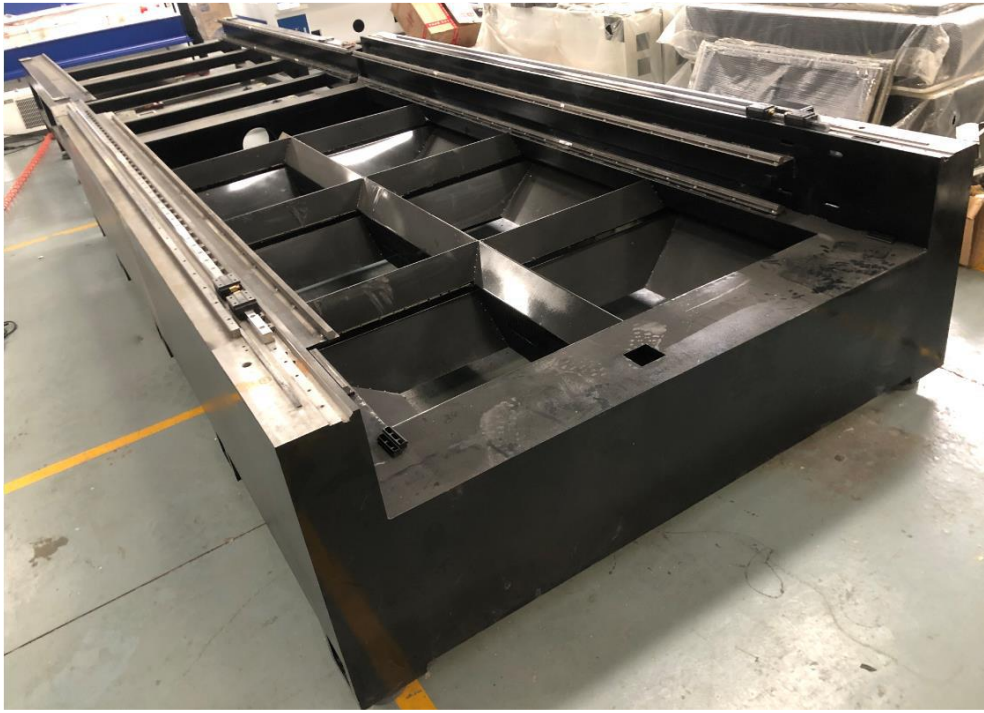
- **Gázvezérlő szelep / Gas Assist Valves (Solenoid Valve, SMC Proportional Valve)**

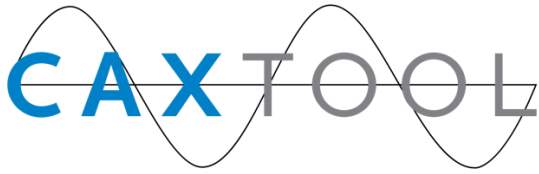


Gas assists cutting either in cutting speed, cutting thickness or cutting effect. For example, oxygen helps to cut faster and thicker; nitrogen helps to get brighter cutting edge. The solenoid valve controls the gas blowing. Gas blows only during cutting, which saves your gas cost. SMC proportional valve controls the gas pressure and brings good cutting all the time, for example, gas pressure is lowered when cutting corners.

- **Gépágy / Machine Body**

Hegesztett gépágy 12 mm-es lemezvastagsággal. Plate welded machine body. Plate thickness: 12mm.





Caxtool Kft.
6791 Szeged, Dorozsmai út 157. EU
+36 62 254 826
+36 30 565 1812
d.zanocz@caxtool.hu
info@caxtool.hu

Adószám: 12871856-2-06
Adószám: HU 12871856
Bankszámla száma: 57600101-11102986
SWIFT (BIC): TAKBHUHB
IBAN: HU65 57600101 11102986 00000000
cégjegyzékszám: 06-09-014002
info:

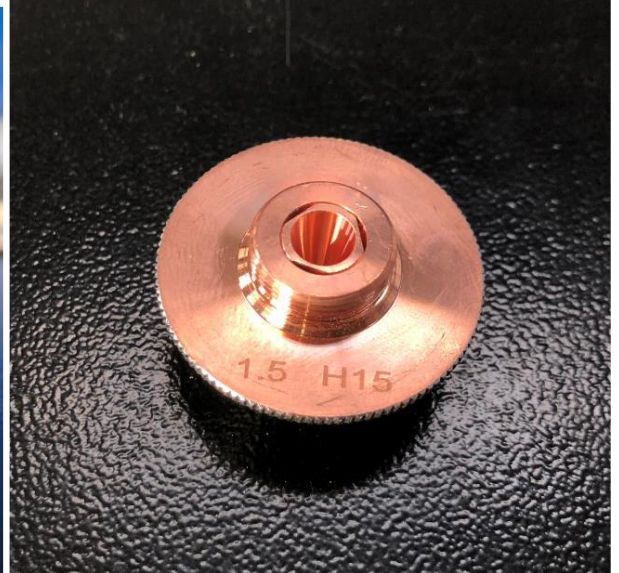
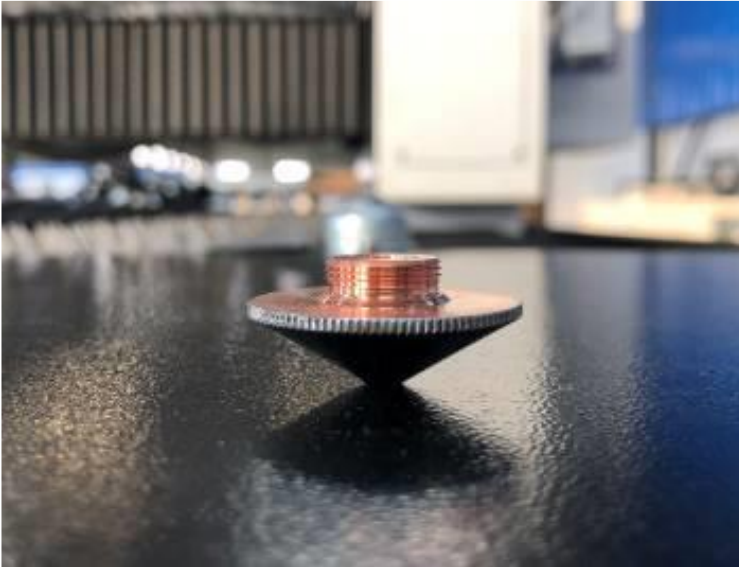
- **Gépasztal / Machine Table**

Saw-shape machine table holds metal sheet steady with little touch with metal sheet. The saws are thick and durable. In both sides of machine table, there are rolling balls for assisting sheets loading. Machine table size is 1500mm by 3000 mm. There are 2 machine tables which are exchange able. You can load material on to one table during machine is cutting on another table. After cutting, the tables they exchange. Exchange table transmission is by chain.



- **Fogyó anyagok / Spare Parts With Machine**

5 nozzles (single/double layers, 1.0/1.5/2.0 diameter for your choice) and 3 protective mirrors.



- **Lézervédelmi szemüveg / Safety goggles**

